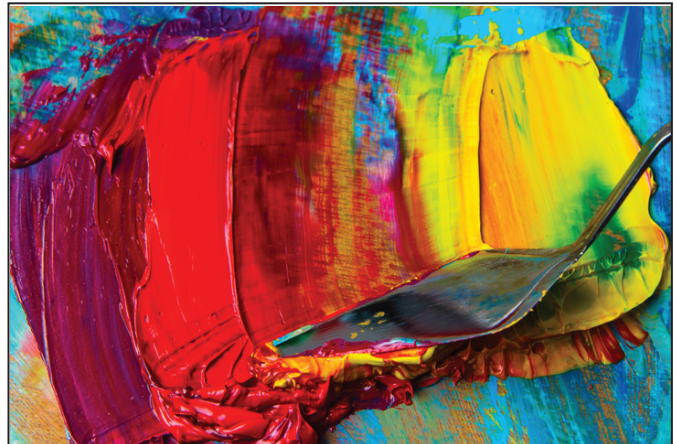


You will need:

Paintbrushes,
Palette knives
Tempera paint -in yellow, red,
blue, black and white
Thick and thin brushes
Art paper
A thin sheet of wood panel
PVA glue



Palette knives are useful but you can smear paint with other items you can find. For example, cut some plastic from an old food container.

Experiment on Art Paper:

- 1) Using plenty of yellow, brush on thick strokes horizontally across the page.
- 2) Add a small amount of red paint to your brush and stroke horizontally across the page, blending the two colours as you paint.
(This will make shades of orange)
- 3) Create lighter areas using the same method with white paint.
- 4) Brush across a tiny amount of blue or black to highlight darker areas.
(The red and yellow (orange) paint will go brown).

** Try not to over-blend. The best effects will come from streaks of colour that are not entirely mixed.*

Paint on wood:

- 1) Prime your wood with a thin undercoat of white paint. Allow to dry completely.
- 2) Blend a little PVA glue with your tempera paints before you begin. This will help thick layers of paint bond with the wood without cracking.
- 3) Use the method described above to create your own Turner style streaks of colour on the wood panel.
- 4) Allow to dry before adding sharper details if needed.

